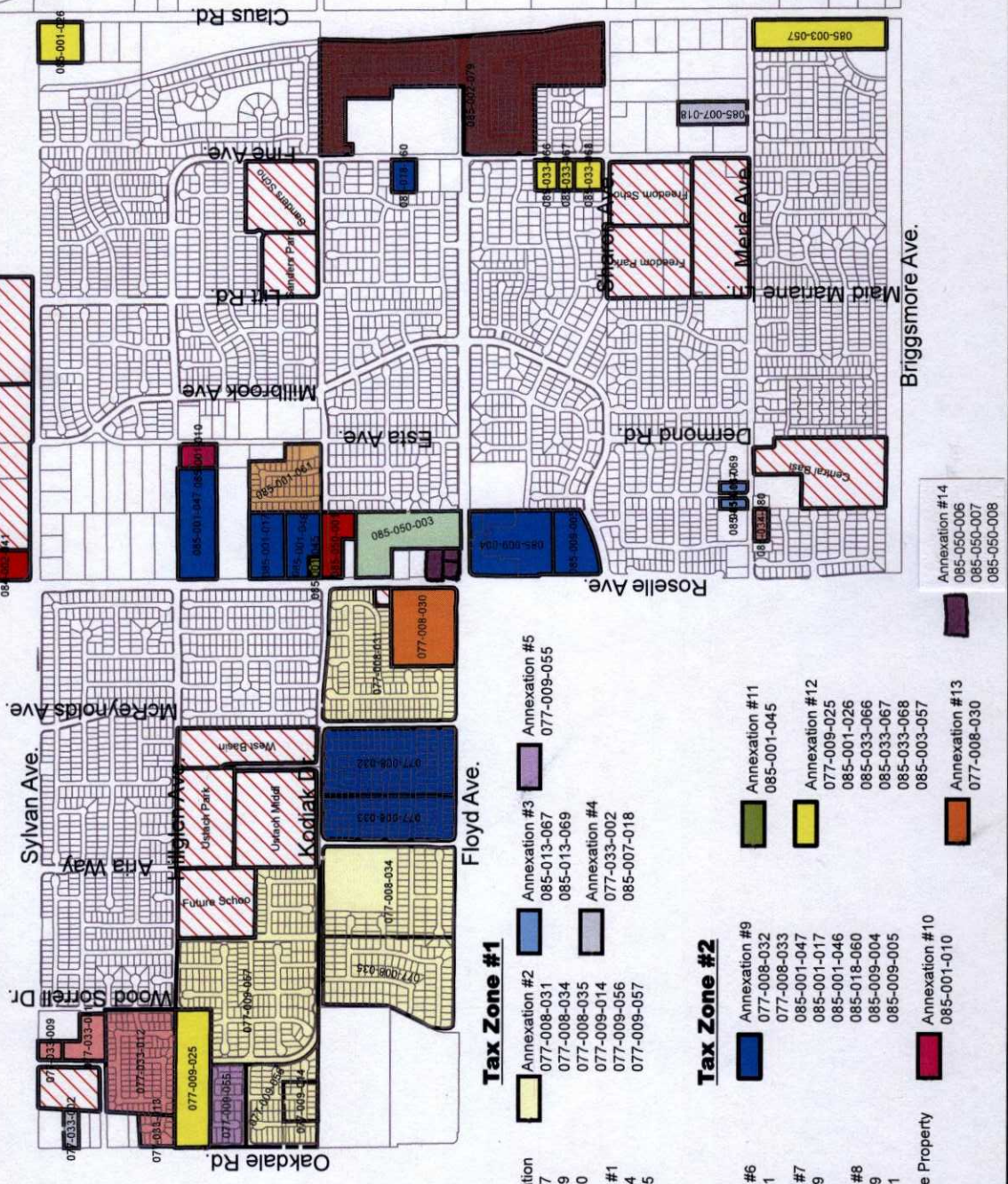


City of Modesto
 Community Facilities District No. 2004-1
 (Village One #2)
 IDENTIFICATION OF TAX ZONES



Tax Zone #1

- CFD Formation
- 077-033-007
- 077-033-009
- 085-034-080
- Annexation #1
- 085-002-034
- 085-002-035

- Annexation #2
- 077-008-031
- 077-008-034
- 077-008-035
- 077-009-014
- 077-009-056
- 077-009-057

- Annexation #3
- 085-013-087
- 085-013-089
- Annexation #4
- 077-033-002
- 085-007-018

Tax Zone #2

- Annexation #6
- 085-001-061
- Annexation #7
- 085-002-079
- Annexation #8
- 085-002-039
- 084-002-041
- Non-taxable Property

- Annexation #9
- 077-008-032
- 077-008-033
- 085-001-047
- 085-001-017
- 085-001-046
- 085-018-060
- 085-009-004
- 085-009-005

- Annexation #11
- 085-001-045
- Annexation #12
- 077-009-025
- 085-001-026
- 085-033-066
- 085-033-067
- 085-033-068
- 085-003-057
- Annexation #13
- 077-008-030

- Annexation #14
- 085-050-006
- 085-050-007
- 085-050-008