



## Fact Sheet

# Coffee Road Pavement Rehabilitation Project Phase II (Scenic Drive to Norwegian Avenue)

### Project Description:

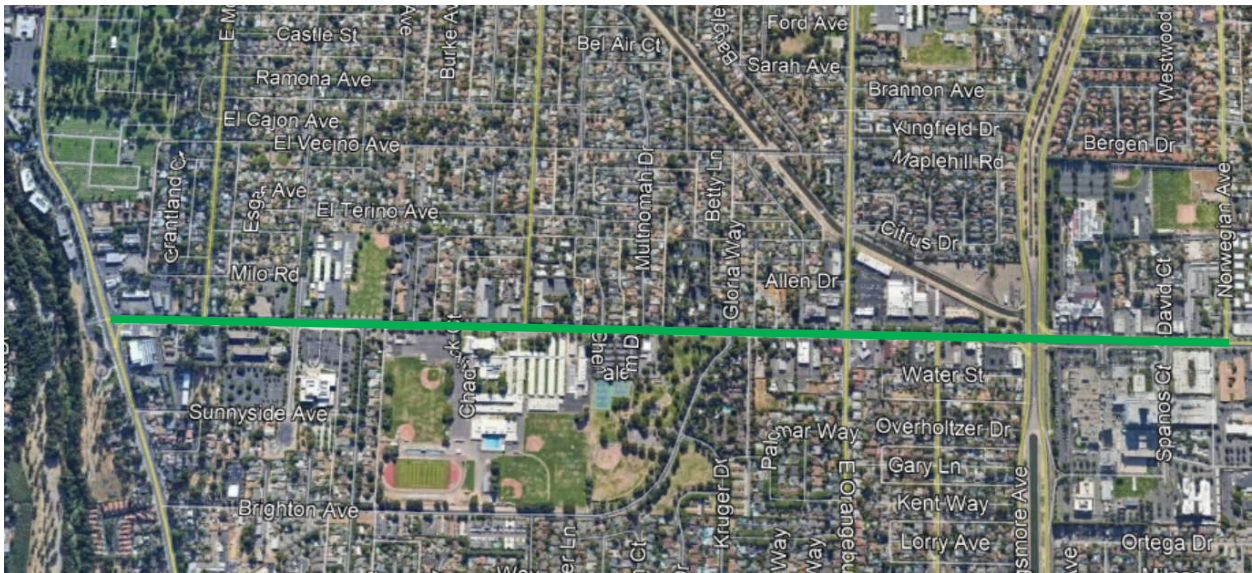
Pavement rehabilitation project on Coffee Road from Scenic Drive to Norwegian Avenue. The length of the project is approximately 1.5 miles. Anticipated project improvements include roadway resurfacing, new signage and striping, ADA upgrades, signal upgrades (including detection cameras) and storm drainage system improvements.

### Funding Source:

Measure L Funds – Local Street & Roads (Fiscal Year 2021-22) - \$2,748,500

### Project Budget:

Engineering/Design/Administration	\$358,500
<u>Construction (Total)</u>	<u>\$2,390,000</u>
<b>TOTAL</b>	<b>\$2,748,500</b>



*In accordance with the requirements of Title II of the Americans with Disabilities Act ("ADA") of 1990, the Fair Employment & Housing Act ("FEHA"), the Rehabilitation Act of 1973 (as amended), Government Code section 11135 and other applicable codes, the City of Modesto ("City") will not discriminate against individuals on the basis of disability in the City's services, programs, or activities. For more information, please visit the City of Modesto website at <https://www.modestogov.com/865/Americans-with-Disabilities-Act-ADA>*