



Fact Sheet

Dry Creek Trail Pavement Rehabilitation & ADA Upgrade Project (Kewin Park to Thousand Oaks Park)

Project Description:

Pavement rehabilitation project on Dry Creek Bike Path from Kewin Park to Thousand Oaks Park. The length of the project is 0.6 miles. This is the second part of a multi-year effort to rehabilitate the Dry Creek Trail from La Loma to El Vista Avenue. Anticipated project improvements include bike path widening and resurfacing, new striping, new signage, shoulder improvements and ADA upgrades.

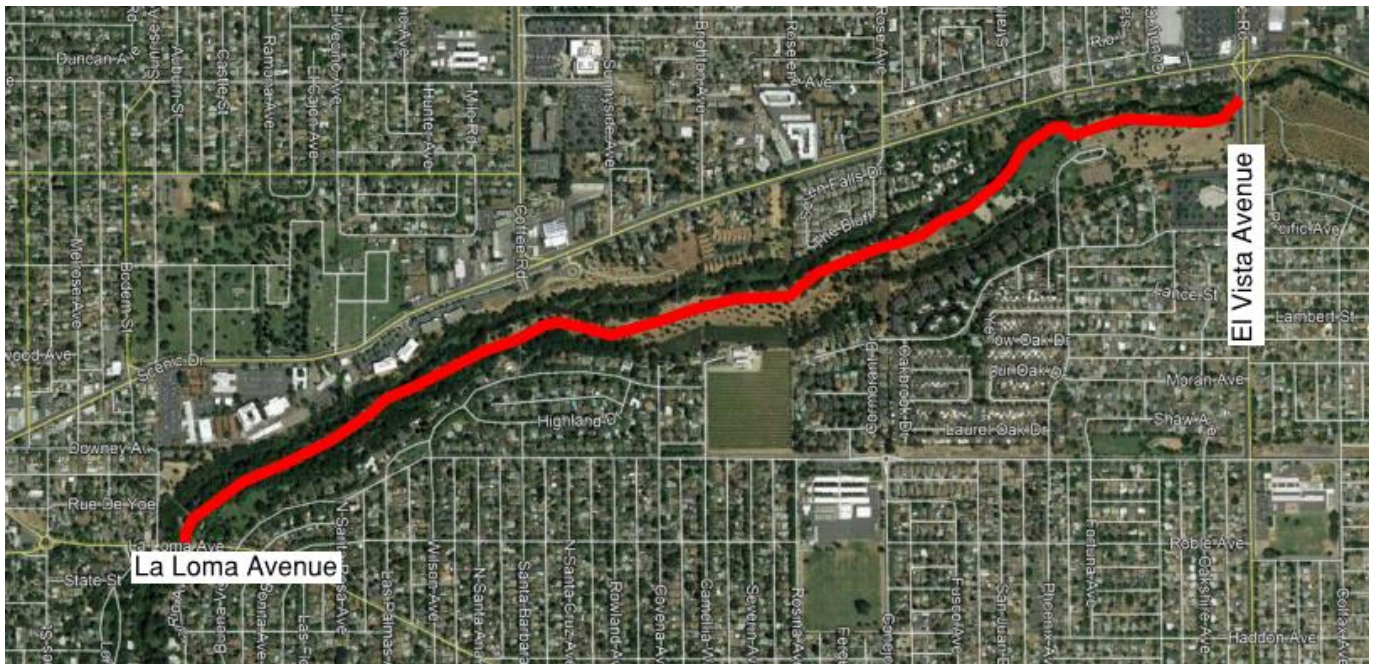
- Actual project limits are subject to change

Funding Source:

Measure L Funds – Local Street & Roads (Fiscal Year 2019-2020) - \$687,704

Project Budget:

Engineering/Design/Administration	\$94,856
Construction (Total)	\$592,848
TOTAL	\$687,704



In accordance with the requirements of Title II of the Americans with Disabilities Act ("ADA") of 1990, the Fair Employment & Housing Act ("FEHA"), the Rehabilitation Act of 1973 (as amended), Government Code section 11135 and other applicable codes, the City of Modesto ("City") will not discriminate against individuals on the basis of disability in the City's services, programs, or activities. For more information, please visit the City of Modesto website at <https://www.modestogov.com/865/Americans-with-Disabilities-Act-ADA>