



Fact Sheet

Wylie, Floyd and Carver Street Improvements Project

Project Description:

Pavement rehabilitation and ADA ramp upgrades on portions of Wylie Drive, Floyd Avenue and Carver Avenue.

- ❖ Actual project limits are subject to change.

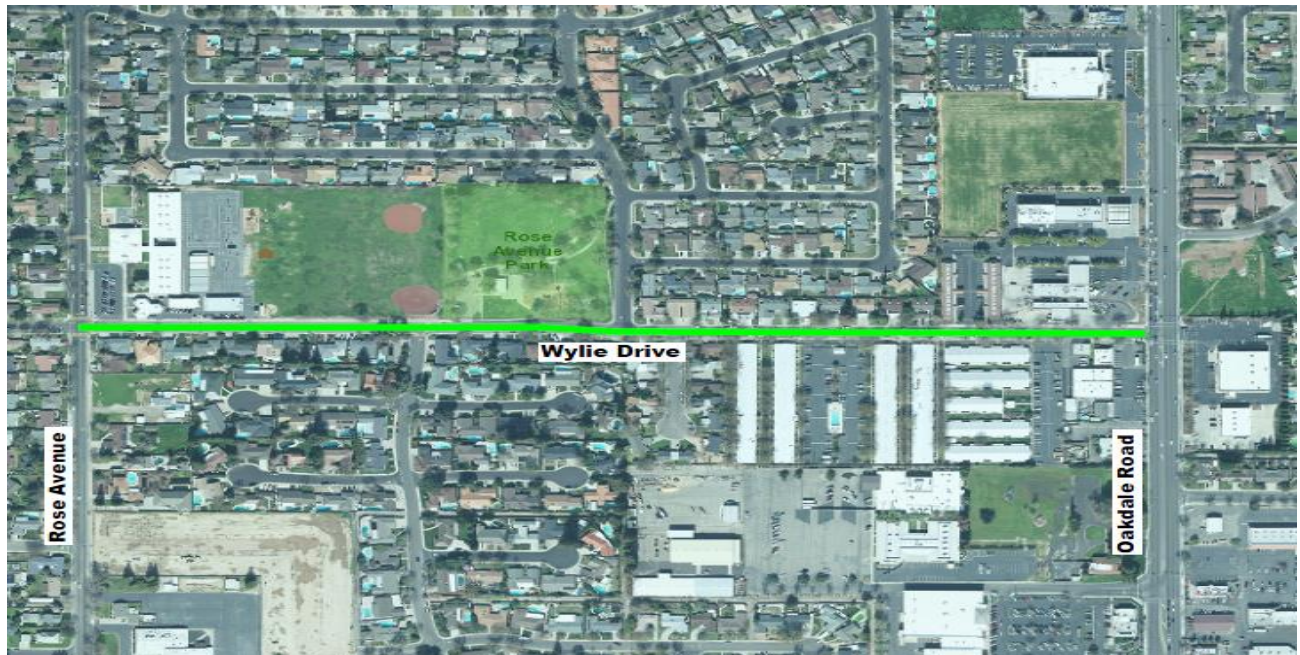
Funding Source:

Measure L – Local Streets and Roads (Fiscal Year 2017-2018) - \$300,000

Measure L – Local Streets and Roads (Fiscal Year 2018-2019) - \$1,700,000

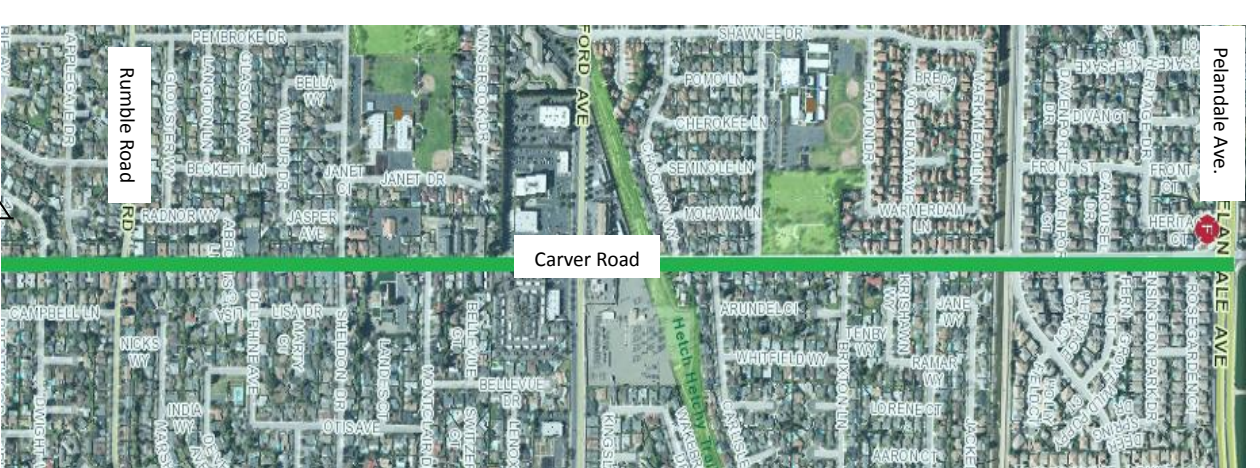
Project Budget:

	(FY 2017-2018)	(FY 2018-2019)	Total
Engineering/Design/Administration	\$300,000	N/A	\$300,000
Construction (Total)	N/A	\$1,700,000	\$1,700,000
TOTAL	\$300,000	\$1,700,000	\$2,000,000





Match Line A



MATCH LINE A