

## **Appendix D**

---

Biological Resources Impacts Evaluation  
Supporting Documentation



## USFWS 2016 – IPaC Trust Resources Report

---

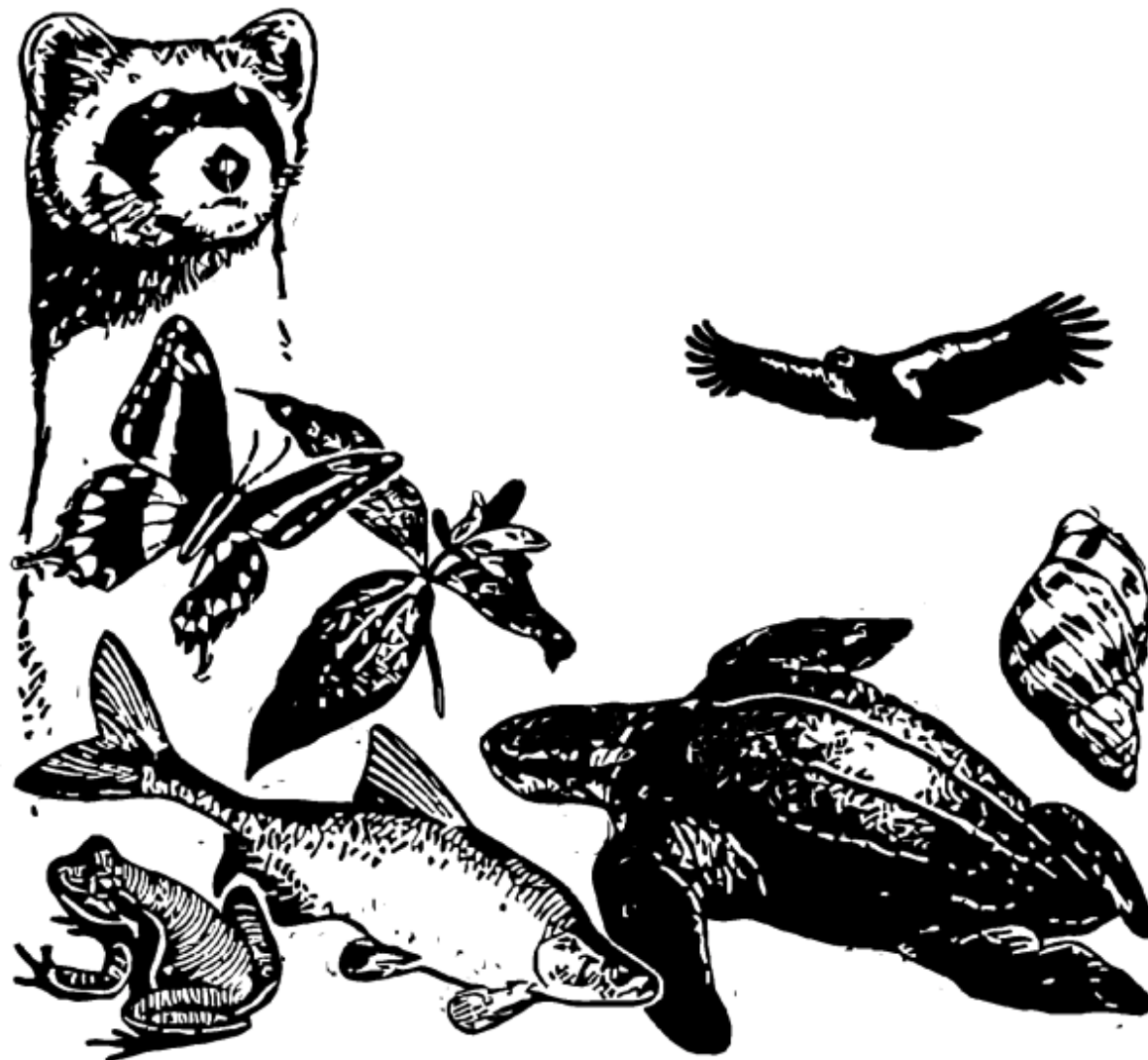


# Del Rio Tank and Wells Project

## *IPaC Trust Resources Report*

Generated May 10, 2016 01:26 PM MDT, IPaC v3.0.7

This report is for informational purposes only and should not be used for planning or analyzing project level impacts. For project reviews that require U.S. Fish & Wildlife Service review or concurrence, please return to the IPaC website and request an official species list from the Regulatory Documents page.



# Table of Contents

- IPaC Trust Resources Report ..... [1](#)
- Project Description ..... [1](#)
- Endangered Species ..... [2](#)
- Migratory Birds ..... [4](#)
- Refuges & Hatcheries ..... [7](#)
- Wetlands ..... [8](#)

U.S. Fish & Wildlife Service

# IPaC Trust Resources Report



NAME

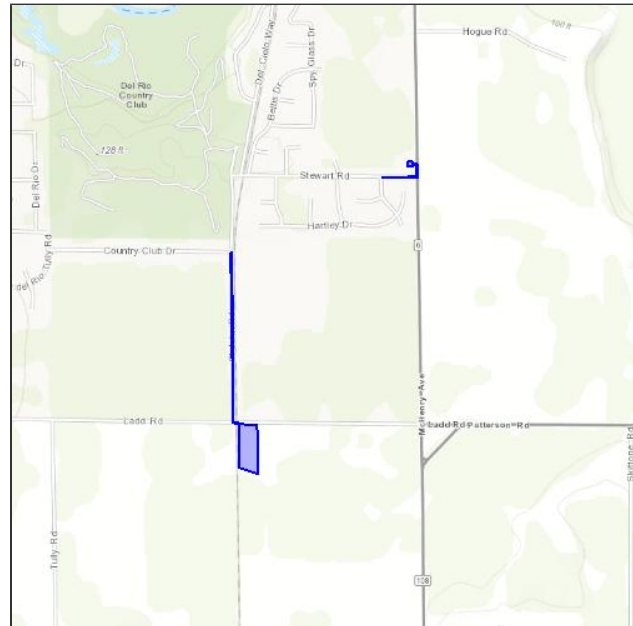
Del Rio Tank and Wells Project

LOCATION

Stanislaus County, California

IPAC LINK

[https://ecos.fws.gov/ipac/project/  
FJFXC-E2NKV-HXVBH-XDTXV-GNRVEM](https://ecos.fws.gov/ipac/project/FJFXC-E2NKV-HXVBH-XDTXV-GNRVEM)



## U.S. Fish & Wildlife Service Contact Information

Trust resources in this location are managed by:

### **Sacramento Fish And Wildlife Office**

Federal Building

2800 Cottage Way, Room W-2605

Sacramento, CA 95825-1846

(916) 414-6600

## Endangered Species

Proposed, candidate, threatened, and endangered species are managed by the [Endangered Species Program](#) of the U.S. Fish & Wildlife Service.

**This USFWS trust resource report is for informational purposes only and should not be used for planning or analyzing project level impacts.**

For project evaluations that require USFWS concurrence/review, please return to the IPaC website and request an official species list from the Regulatory Documents section.

[Section 7](#) of the Endangered Species Act **requires** Federal agencies to "request of the Secretary information whether any species which is listed or proposed to be listed may be present in the area of such proposed action" for any project that is conducted, permitted, funded, or licensed by any Federal agency.

**A letter from the local office and a species list which fulfills this requirement can only be obtained by requesting an official species list either from the Regulatory Documents section in IPaC or from the local field office directly.**

The list of species below are those that may occur or could potentially be affected by activities in this location:

### Amphibians

**California Red-legged Frog** *Rana draytonii* Threatened

CRITICAL HABITAT

There is **final** critical habitat designated for this species.

[http://ecos.fws.gov/tess\\_public/profile/speciesProfile.action?sPCODE=D02D](http://ecos.fws.gov/tess_public/profile/speciesProfile.action?sPCODE=D02D)

**California Tiger Salamander** *Ambystoma californiense* Threatened

CRITICAL HABITAT

There is **final** critical habitat designated for this species.

[http://ecos.fws.gov/tess\\_public/profile/speciesProfile.action?sPCODE=D01T](http://ecos.fws.gov/tess_public/profile/speciesProfile.action?sPCODE=D01T)



## Crustaceans

**Vernal Pool Fairy Shrimp** *Branchinecta lynchi* Threatened

CRITICAL HABITAT

There is **final** critical habitat designated for this species.

[http://ecos.fws.gov/tess\\_public/profile/speciesProfile.action?spcode=K03G](http://ecos.fws.gov/tess_public/profile/speciesProfile.action?spcode=K03G)

**Vernal Pool Tadpole Shrimp** *Lepidurus packardii* Endangered

CRITICAL HABITAT

There is **final** critical habitat designated for this species.

[http://ecos.fws.gov/tess\\_public/profile/speciesProfile.action?spcode=K048](http://ecos.fws.gov/tess_public/profile/speciesProfile.action?spcode=K048)

## Fishes

**Delta Smelt** *Hypomesus transpacificus* Threatened

CRITICAL HABITAT

There is **final** critical habitat designated for this species.

[http://ecos.fws.gov/tess\\_public/profile/speciesProfile.action?spcode=E070](http://ecos.fws.gov/tess_public/profile/speciesProfile.action?spcode=E070)

**Steelhead** *Oncorhynchus (=Salmo) mykiss* Threatened

CRITICAL HABITAT

There is **final** critical habitat designated for this species.

[http://ecos.fws.gov/tess\\_public/profile/speciesProfile.action?spcode=E08D](http://ecos.fws.gov/tess_public/profile/speciesProfile.action?spcode=E08D)

## Insects

**Valley Elderberry Longhorn Beetle** *Desmocerus californicus dimorphus* Threatened

CRITICAL HABITAT

There is **final** critical habitat designated for this species.

[http://ecos.fws.gov/tess\\_public/profile/speciesProfile.action?spcode=I01L](http://ecos.fws.gov/tess_public/profile/speciesProfile.action?spcode=I01L)

## Reptiles

**Giant Garter Snake** *Thamnophis gigas* Threatened

CRITICAL HABITAT

**No critical habitat** has been designated for this species.

[http://ecos.fws.gov/tess\\_public/profile/speciesProfile.action?spcode=C057](http://ecos.fws.gov/tess_public/profile/speciesProfile.action?spcode=C057)

## Critical Habitats

**There are no critical habitats in this location**

## Migratory Birds

Birds are protected by the [Migratory Bird Treaty Act](#) and the [Bald and Golden Eagle Protection Act](#).

Any activity that results in the take of migratory birds or eagles is prohibited unless authorized by the U.S. Fish & Wildlife Service.<sup>[1]</sup> There are no provisions for allowing the take of migratory birds that are unintentionally killed or injured.

Any person or organization who plans or conducts activities that may result in the take of migratory birds is responsible for complying with the appropriate regulations and implementing appropriate conservation measures.

---

1. 50 C.F.R. Sec. 10.12 and 16 U.S.C. Sec. 668(a)

Additional information can be found using the following links:

- Birds of Conservation Concern  
<http://www.fws.gov/birds/management/managed-species/birds-of-conservation-concern.php>
- Conservation measures for birds  
<http://www.fws.gov/birds/management/project-assessment-tools-and-guidance/conservation-measures.php>
- Year-round bird occurrence data  
<http://www.birdscanada.org/birdmon/default/datasummaries.jsp>

The following species of migratory birds could potentially be affected by activities in this location:

<b>Bald Eagle</b> <i>Haliaeetus leucocephalus</i> Year-round <a href="http://ecos.fws.gov/tess_public/profile/speciesProfile.action?sPCODE=B008">http://ecos.fws.gov/tess_public/profile/speciesProfile.action?sPCODE=B008</a>	Bird of conservation concern
<b>Black Rail</b> <i>Laterallus jamaicensis</i> Season: Breeding <a href="http://ecos.fws.gov/tess_public/profile/speciesProfile.action?sPCODE=B09A">http://ecos.fws.gov/tess_public/profile/speciesProfile.action?sPCODE=B09A</a>	Bird of conservation concern
<b>Burrowing Owl</b> <i>Athene cunicularia</i> Year-round <a href="http://ecos.fws.gov/tess_public/profile/speciesProfile.action?sPCODE=B0NC">http://ecos.fws.gov/tess_public/profile/speciesProfile.action?sPCODE=B0NC</a>	Bird of conservation concern
<b>Fox Sparrow</b> <i>Passerella iliaca</i> Season: Wintering	Bird of conservation concern

<b>Lesser Yellowlegs</b> <i>Tringa flavipes</i>	Bird of conservation concern
Season: Wintering <a href="http://ecos.fws.gov/tess_public/profile/speciesProfile.action?spcode=B0MD">http://ecos.fws.gov/tess_public/profile/speciesProfile.action?spcode=B0MD</a>	
<b>Lewis's Woodpecker</b> <i>Melanerpes lewis</i>	Bird of conservation concern
Season: Wintering <a href="http://ecos.fws.gov/tess_public/profile/speciesProfile.action?spcode=B0HQ">http://ecos.fws.gov/tess_public/profile/speciesProfile.action?spcode=B0HQ</a>	
<b>Loggerhead Shrike</b> <i>Lanius ludovicianus</i>	Bird of conservation concern
Year-round <a href="http://ecos.fws.gov/tess_public/profile/speciesProfile.action?spcode=B0FY">http://ecos.fws.gov/tess_public/profile/speciesProfile.action?spcode=B0FY</a>	
<b>Long-billed Curlew</b> <i>Numenius americanus</i>	Bird of conservation concern
Season: Wintering <a href="http://ecos.fws.gov/tess_public/profile/speciesProfile.action?spcode=B06S">http://ecos.fws.gov/tess_public/profile/speciesProfile.action?spcode=B06S</a>	
<b>Marbled Godwit</b> <i>Limosa fedoa</i>	Bird of conservation concern
Season: Wintering <a href="http://ecos.fws.gov/tess_public/profile/speciesProfile.action?spcode=B0JL">http://ecos.fws.gov/tess_public/profile/speciesProfile.action?spcode=B0JL</a>	
<b>Mountain Plover</b> <i>Charadrius montanus</i>	Bird of conservation concern
Season: Wintering <a href="http://ecos.fws.gov/tess_public/profile/speciesProfile.action?spcode=B078">http://ecos.fws.gov/tess_public/profile/speciesProfile.action?spcode=B078</a>	
<b>Nuttall's Woodpecker</b> <i>Picoides nuttallii</i>	Bird of conservation concern
Year-round <a href="http://ecos.fws.gov/tess_public/profile/speciesProfile.action?spcode=B0HT">http://ecos.fws.gov/tess_public/profile/speciesProfile.action?spcode=B0HT</a>	
<b>Oak Titmouse</b> <i>Baeolophus inornatus</i>	Bird of conservation concern
Year-round <a href="http://ecos.fws.gov/tess_public/profile/speciesProfile.action?spcode=B0MJ">http://ecos.fws.gov/tess_public/profile/speciesProfile.action?spcode=B0MJ</a>	
<b>Peregrine Falcon</b> <i>Falco peregrinus</i>	Bird of conservation concern
Season: Wintering <a href="http://ecos.fws.gov/tess_public/profile/speciesProfile.action?spcode=B0FU">http://ecos.fws.gov/tess_public/profile/speciesProfile.action?spcode=B0FU</a>	
<b>Short-eared Owl</b> <i>Asio flammeus</i>	Bird of conservation concern
Season: Wintering <a href="http://ecos.fws.gov/tess_public/profile/speciesProfile.action?spcode=B0HD">http://ecos.fws.gov/tess_public/profile/speciesProfile.action?spcode=B0HD</a>	
<b>Swainson's Hawk</b> <i>Buteo swainsoni</i>	Bird of conservation concern
Season: Breeding <a href="http://ecos.fws.gov/tess_public/profile/speciesProfile.action?spcode=B070">http://ecos.fws.gov/tess_public/profile/speciesProfile.action?spcode=B070</a>	
<b>Tricolored Blackbird</b> <i>Agelaius tricolor</i>	Bird of conservation concern
Year-round <a href="http://ecos.fws.gov/tess_public/profile/speciesProfile.action?spcode=B06P">http://ecos.fws.gov/tess_public/profile/speciesProfile.action?spcode=B06P</a>	
<b>Western Grebe</b> <i>aechmophorus occidentalis</i>	Bird of conservation concern
Season: Wintering <a href="http://ecos.fws.gov/tess_public/profile/speciesProfile.action?spcode=B0EA">http://ecos.fws.gov/tess_public/profile/speciesProfile.action?spcode=B0EA</a>	

**Williamson's Sapsucker** *Sphyrapicus thyroideus*

Year-round

[http://ecos.fws.gov/tess\\_public/profile/speciesProfile.action?sPCODE=B0FX](http://ecos.fws.gov/tess_public/profile/speciesProfile.action?sPCODE=B0FX)

Bird of conservation concern

**Yellow-billed Magpie** *Pica nuttalli*

Year-round

[http://ecos.fws.gov/tess\\_public/profile/speciesProfile.action?sPCODE=B0N8](http://ecos.fws.gov/tess_public/profile/speciesProfile.action?sPCODE=B0N8)

Bird of conservation concern

## Wildlife refuges and fish hatcheries

Refuge and fish hatchery data is unavailable at this time.

# Wetlands in the National Wetlands Inventory

Impacts to [NWI wetlands](#) and other aquatic habitats may be subject to regulation under Section 404 of the Clean Water Act, or other State/Federal statutes.

For more information please contact the Regulatory Program of the local [U.S. Army Corps of Engineers District](#).

## DATA LIMITATIONS

The Service's objective of mapping wetlands and deepwater habitats is to produce reconnaissance level information on the location, type and size of these resources. The maps are prepared from the analysis of high altitude imagery. Wetlands are identified based on vegetation, visible hydrology and geography. A margin of error is inherent in the use of imagery; thus, detailed on-the-ground inspection of any particular site may result in revision of the wetland boundaries or classification established through image analysis.

The accuracy of image interpretation depends on the quality of the imagery, the experience of the image analysts, the amount and quality of the collateral data and the amount of ground truth verification work conducted. Metadata should be consulted to determine the date of the source imagery used and any mapping problems.

Wetlands or other mapped features may have changed since the date of the imagery or field work. There may be occasional differences in polygon boundaries or classifications between the information depicted on the map and the actual conditions on site.

## DATA EXCLUSIONS

Certain wetland habitats are excluded from the National mapping program because of the limitations of aerial imagery as the primary data source used to detect wetlands. These habitats include seagrasses or submerged aquatic vegetation that are found in the intertidal and subtidal zones of estuaries and nearshore coastal waters. Some deepwater reef communities (coral or tubercid worm reefs) have also been excluded from the inventory. These habitats, because of their depth, go undetected by aerial imagery.

## DATA PRECAUTIONS

Federal, state, and local regulatory agencies with jurisdiction over wetlands may define and describe wetlands in a different manner than that used in this inventory. There is no attempt, in either the design or products of this inventory, to define the limits of proprietary jurisdiction of any Federal, state, or local government or to establish the geographical scope of the regulatory programs of government agencies. Persons intending to engage in activities involving modifications within or adjacent to wetland areas should seek the advice of appropriate federal, state, or local agencies concerning specified agency regulatory programs and proprietary jurisdictions that may affect such activities.

**There are no wetlands in this location**

## CDFW 2016 – CNDDDB Results

---







# Selected Elements by Scientific Name

California Department of Fish and Wildlife

California Natural Diversity Database



Query Criteria: Quad<span style='color:Red'> IS </span>(Avena (3712171)<span style='color:Red'> OR </span>Brush Lake (3712151)<span style='color:Red'> OR </span>Ceres (3712058)<span style='color:Red'> OR </span>Denair (3712057)<span style='color:Red'> OR </span>Escalon (3712078)<span style='color:Red'> OR </span>Manteca (3712172)<span style='color:Red'> OR </span>Oakdale (3712077)<span style='color:Red'> OR </span>Ripon (3712162)<span style='color:Red'> OR </span>Riverbank (3712068)<span style='color:Red'> OR </span>Salida (3712161)<span style='color:Red'> OR </span>Waterford (3712067)<span style='color:Red'> OR </span>Westley (3712152))

Species	Element Code	Federal Status	State Status	Global Rank	State Rank	Rare Plant Rank/CDFW SSC or FP
<b>Agelaius tricolor</b> tricolored blackbird	ABPBXB0020	None	None	G2G3	S1S2	SSC
<b>Ambystoma californiense</b> California tiger salamander	AAAAA01180	Threatened	Threatened	G2G3	S2S3	SSC
<b>Ardea herodias</b> great blue heron	ABNGA04010	None	None	G5	S4	
<b>Athene cunicularia</b> burrowing owl	ABNSB10010	None	None	G4	S3	SSC
<b>Atriplex cordulata var. cordulata</b> heartscale	PDCHE040B0	None	None	G3T2	S2	1B.2
<b>Atriplex minuscula</b> lesser saltscale	PDCHE042M0	None	None	G2	S2	1B.1
<b>Atriplex subtilis</b> subtle orache	PDCHE042T0	None	None	G1	S1	1B.2
<b>Blepharizonia plumosa</b> big tarplant	PDAST1C011	None	None	G2	S2	1B.1
<b>Bombus caliginosus</b> obscure bumble bee	IIHYM24380	None	None	G4?	S1S2	
<b>Bombus crotchii</b> Crotch bumble bee	IIHYM24480	None	None	G3G4	S1S2	
<b>Bombus occidentalis</b> western bumble bee	IIHYM24250	None	None	G2G3	S1	
<b>Branchinecta conservatio</b> Conservancy fairy shrimp	ICBRA03010	Endangered	None	G2	S2	
<b>Branchinecta lynchi</b> vernal pool fairy shrimp	ICBRA03030	Threatened	None	G3	S3	
<b>Branta hutchinsii leucopareia</b> cackling (=Aleutian Canada) goose	ABNJB05035	Delisted	None	G5T3	S3	
<b>Buteo swainsoni</b> Swainson's hawk	ABNKC19070	None	Threatened	G5	S3	
<b>California macrophylla</b> round-leaved filaree	PDGER01070	None	None	G3?	S3?	1B.2
<b>Caulanthus lemmonii</b> Lemmon's jewelflower	PDBRA0M0E0	None	None	G3	S3	1B.2
<b>Clarkia rostrata</b> beaked clarkia	PDONA050Y0	None	None	G2G3	S2S3	1B.3



Selected Elements by Scientific Name  
California Department of Fish and Wildlife  
California Natural Diversity Database



Species	Element Code	Federal Status	State Status	Global Rank	State Rank	Rare Plant Rank/CDFW SSC or FP
<b>Coastal and Valley Freshwater Marsh</b> Coastal and Valley Freshwater Marsh	CTT52410CA	None	None	G3	S2.1	
<b>Coccyzus americanus occidentalis</b> western yellow-billed cuckoo	ABNRB02022	Threatened	Endangered	G5T2T3	S1	
<b>Corynorhinus townsendii</b> Townsend's big-eared bat	AMACC08010	None	Candidate Threatened	G3G4	S2	SSC
<b>Desmocerus californicus dimorphus</b> valley elderberry longhorn beetle	IICOL48011	Threatened	None	G3T2	S2	
<b>Egretta thula</b> snowy egret	ABNGA06030	None	None	G5	S4	
<b>Elderberry Savanna</b> Elderberry Savanna	CTT63440CA	None	None	G2	S2.1	
<b>Emys marmorata</b> western pond turtle	ARAAD02030	None	None	G3G4	S3	SSC
<b>Eryngium racemosum</b> Delta button-celery	PDAP10Z0S0	None	Endangered	G1Q	S1	1B.1
<b>Eschscholzia rhombipetala</b> diamond-petaled California poppy	PDPAP0A0D0	None	None	G1	S1	1B.1
<b>Eumops perotis californicus</b> western mastiff bat	AMACD02011	None	None	G5T4	S3S4	SSC
<b>Falco columbarius</b> merlin	ABNKD06030	None	None	G5	S3S4	WL
<b>Great Valley Cottonwood Riparian Forest</b> Great Valley Cottonwood Riparian Forest	CTT61410CA	None	None	G2	S2.1	
<b>Great Valley Mixed Riparian Forest</b> Great Valley Mixed Riparian Forest	CTT61420CA	None	None	G2	S2.2	
<b>Great Valley Valley Oak Riparian Forest</b> Great Valley Valley Oak Riparian Forest	CTT61430CA	None	None	G1	S1.1	
<b>Icteria virens</b> yellow-breasted chat	ABPBX24010	None	None	G5	S3	SSC
<b>Lasiurus blossevillii</b> western red bat	AMACC05060	None	None	G5	S3	SSC
<b>Lasiurus cinereus</b> hoary bat	AMACC05030	None	None	G5	S4	
<b>Legenere limosa</b> legenere	PDCAM0C010	None	None	G2	S2	1B.1
<b>Lepidurus packardi</b> vernal pool tadpole shrimp	ICBRA10010	Endangered	None	G4	S3S4	
<b>Linderiella occidentalis</b> California linderiella	ICBRA06010	None	None	G2G3	S2S3	
<b>Lytta moesta</b> moestan blister beetle	IICOL4C020	None	None	G2	S2	



Selected Elements by Scientific Name  
California Department of Fish and Wildlife  
California Natural Diversity Database



Species	Element Code	Federal Status	State Status	Global Rank	State Rank	Rare Plant Rank/CDFW SSC or FP
<b><i>Melospiza melodia</i></b> song sparrow ("Modesto" population)	ABPBXA3010	None	None	G5	S3?	SSC
<b><i>Mylopharodon conocephalus</i></b> hardhead	AFCJB25010	None	None	G3	S3	SSC
<b><i>Myotis yumanensis</i></b> Yuma myotis	AMACC01020	None	None	G5	S4	
<b><i>Neostapfia colusana</i></b> Colusa grass	PMPOA4C010	Threatened	Endangered	G1	S1	1B.1
<b><i>Neotoma fuscipes riparia</i></b> riparian (=San Joaquin Valley) woodrat	AMAFF08081	Endangered	None	G5T1Q	S1	SSC
<b>Northern Hardpan Vernal Pool</b> Northern Hardpan Vernal Pool	CTT44110CA	None	None	G3	S3.1	
<b><i>Oncorhynchus mykiss irideus</i></b> steelhead - Central Valley DPS	AFCHA0209K	Threatened	None	G5T2Q	S2	
<b><i>Orcuttia inaequalis</i></b> San Joaquin Valley Orcutt grass	PMPOA4G060	Threatened	Endangered	G1	S1	1B.1
<b><i>Puccinellia simplex</i></b> California alkali grass	PMPOA53110	None	None	G3	S2	1B.2
<b><i>Sphenopholis obtusata</i></b> prairie wedge grass	PMPOA5T030	None	None	G5	S2	2B.2
<b><i>Sylvilagus bachmani riparius</i></b> riparian brush rabbit	AMAEB01021	Endangered	Endangered	G5T1	S1	
<b><i>Tuctoria greenei</i></b> Greene's tuctoria	PMPOA6N010	Endangered	Rare	G1	S1	1B.1
<b><i>Vireo bellii pusillus</i></b> least Bell's vireo	ABPBW01114	Endangered	Endangered	G5T2	S2	
<b><i>Vulpes macrotis mutica</i></b> San Joaquin kit fox	AMAJA03041	Endangered	Threatened	G4T2	S2	

Record Count: 53

